



Haslemere Health Centre:

Group Q: Griffin, Valentina, Anna and John



Maintaining Healthy Relationships

- Our idea comes from the concept that mental health is similar to the maintenance of a garden, in consequence the chosen location of our project is a beautifully kept garden where our characters are going to encounter different challenges which will be needed to be resolved with healthy communication and supporting each other, reinforcing the lifestyle topic we have chosen



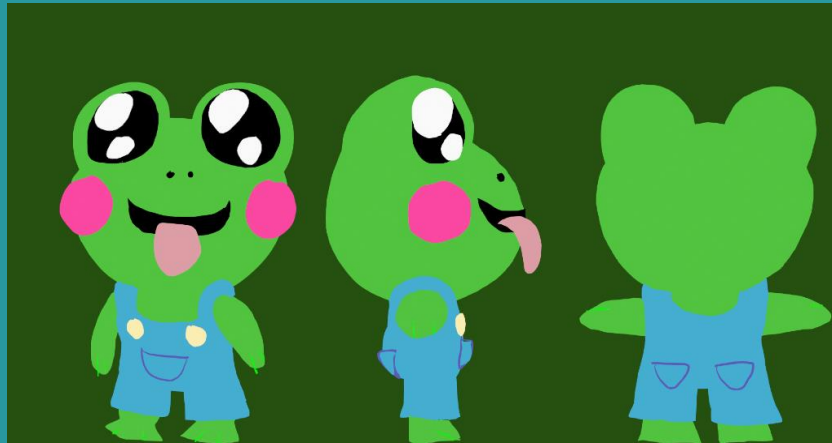
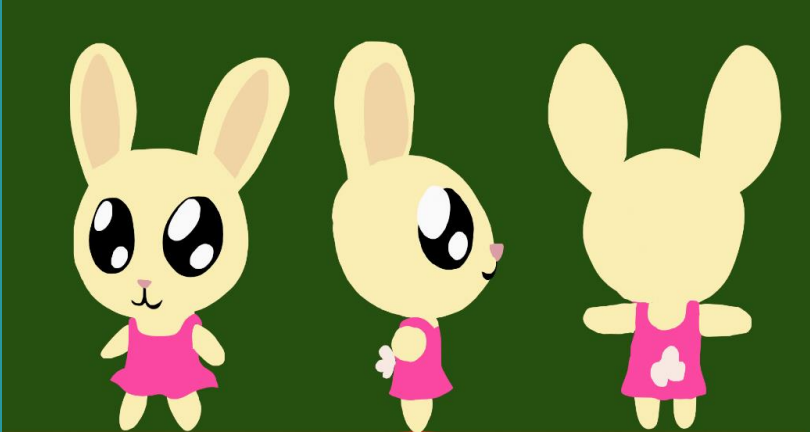
Mood Board



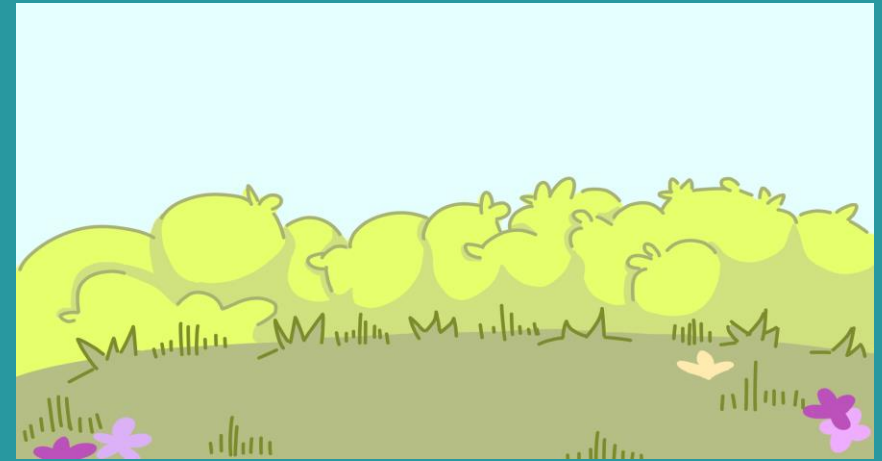
- Show at the same time like this:

Storyboard

Character Designs



Characters are still an under-development area in our work; we are working on these further and deciding what fits best for our project.



Backgrounds

